

Table 1: Cases Categorized by Disposition

	Death sentences	Sentencer-spared	Prosecutor-spared	Total for each year
1994	310	158	290	758
2004	134	113	296	543
2014	73	40	251	364
Total for each type of case	517	311	837	Grand total: 1665

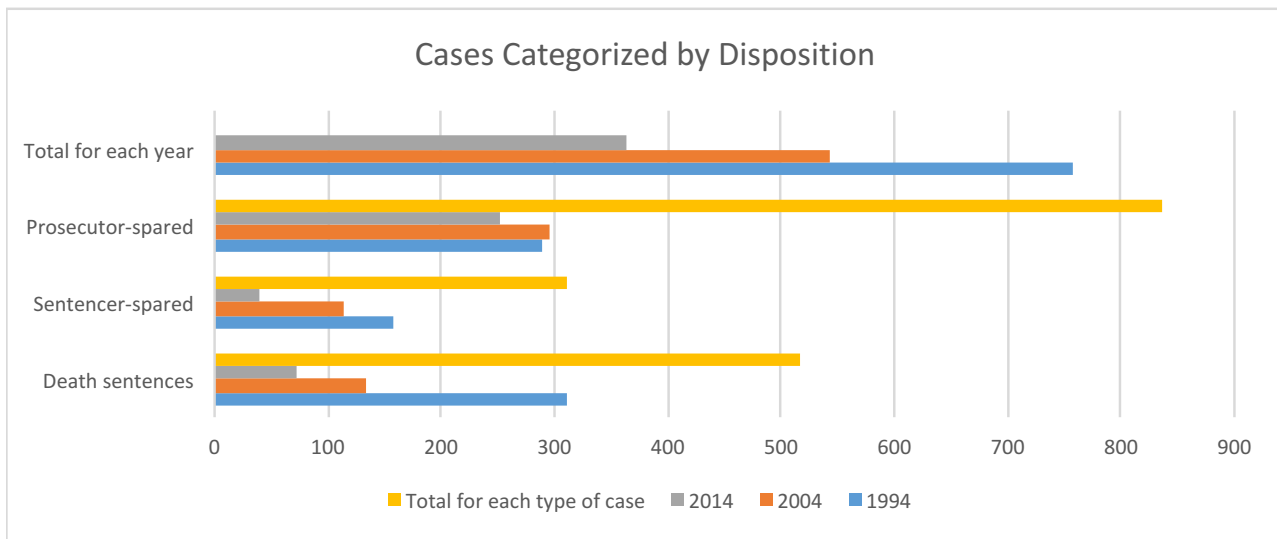


Table 2: Decreases in Murders and Estimated Corresponding Effects

	# of death sentences	Projected # of death sentences if 1994 rate of .016 had continued	Estimated decrease in # of death sentences due to decreased # of murders	Estimated add'l. decrease in # of death sentences <i>not</i> due to decreased # of murders
1994	310			
2004	134	221	89	87
2014	73	199	111	126

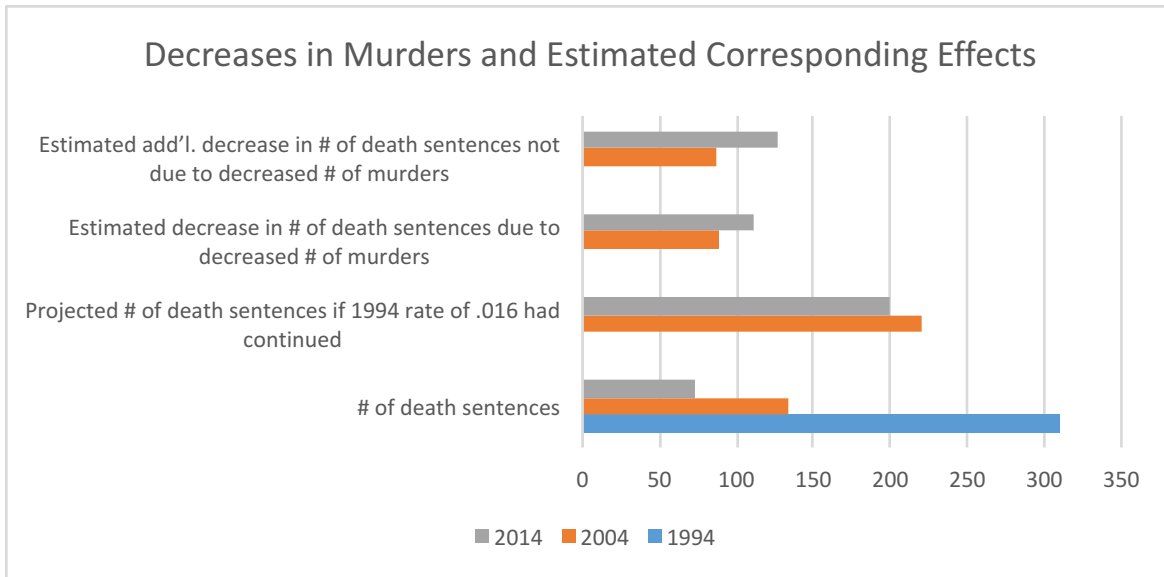


Table 3: Juvenile Death-Eligible Cases

	Death Sentences	Sentencer spared	Prosecutor spared	TOTAL cases with juvenile defendants
1994	18	12	37	67
2004	2	2	5	9

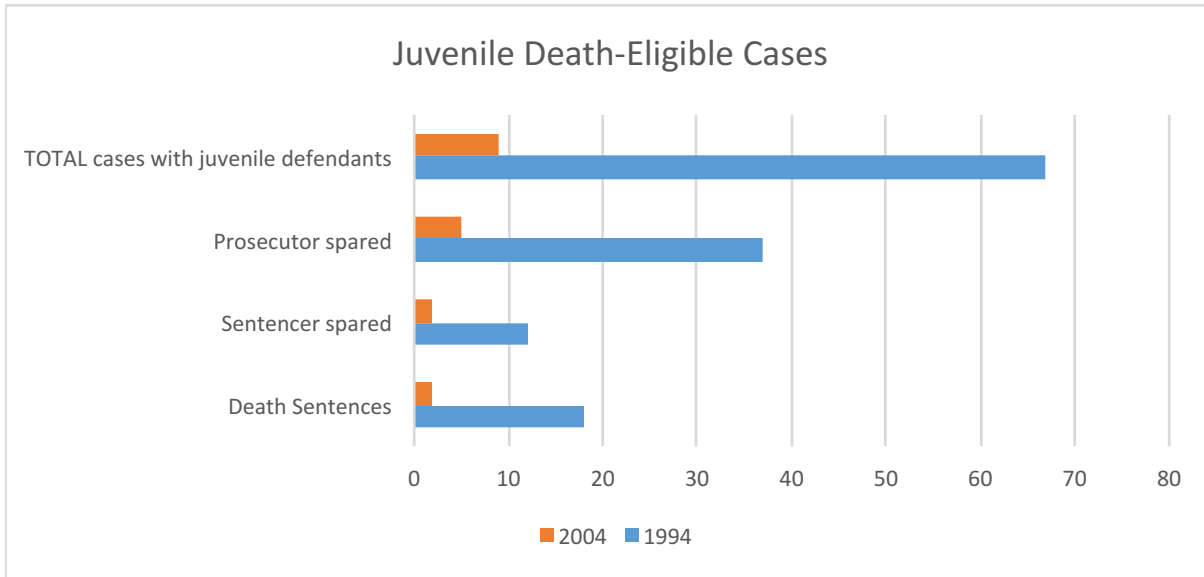


Table 4: Death Sentences in Abolition Jurisdictions

	Death sentences '94	Death sentences '04	Death sentences '14
New Jersey	0	1	n/a
New Mexico	1	0	n/a
Illinois	9	3	n/a
Connecticut	0	1	n/a

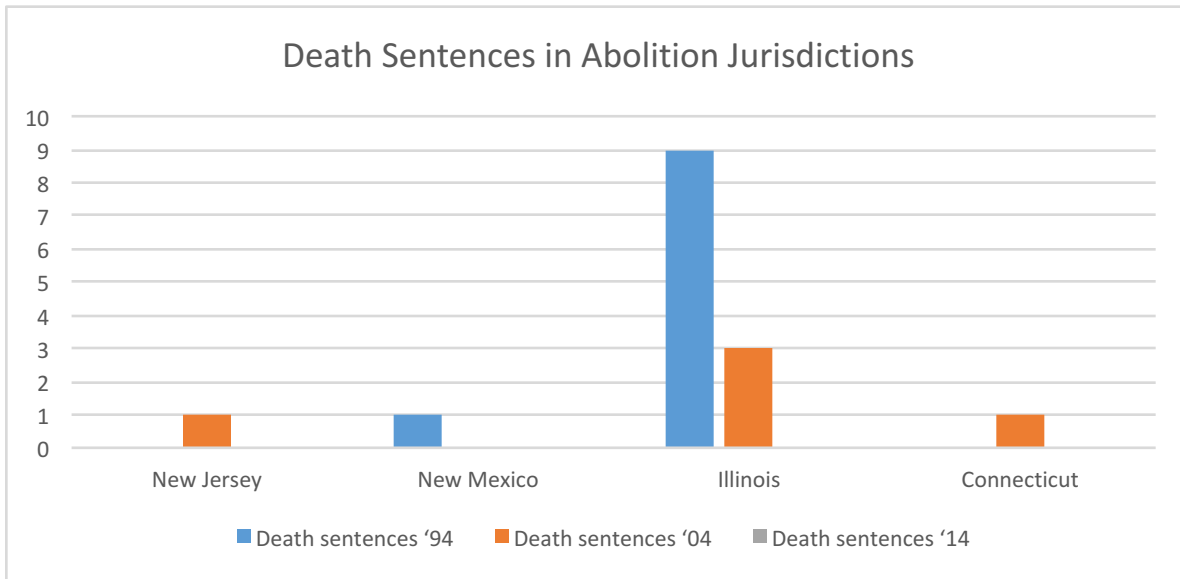


Table 5: Summary of Estimated Portion of the Decline Due to Decreased Death-Eligibility

	Estimated decreased # of death sentences from 1994 to 2004 due to decreases in death-eligibility	Estimated decreased # of death sentences from 1994 to 2014 due to decreases in death-eligibility
Fewer death-eligible murders	89	111
Juvenile exemption	n/a	0—no DS even w/o exemption
Mental retardation exemption	7	6
Abolition	n/a	3
Total	96	120

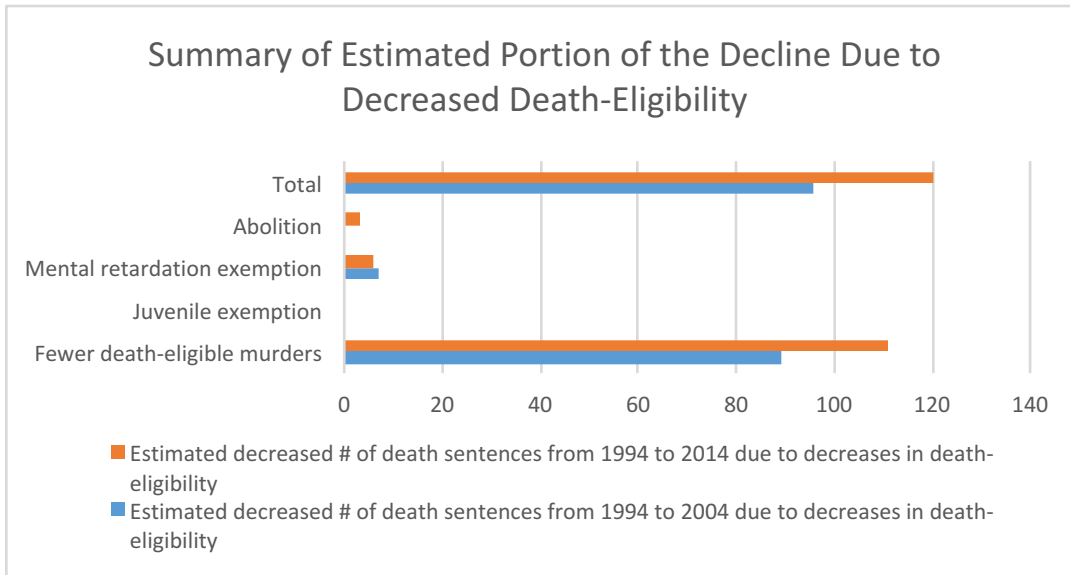


Table 6: Death Sentences Before and After Enactment of LWOP Alternative

	2 years before	1 year before	Year of enactment	1 year after	2 years after
FL—1994	27	32	39	31	25
MS—1994	4	12	5	3	9
NC—1994	22	32	27	34	25
VA—1994	7	8	10	6	1
NE—1995	0	1	0	2	1
OH—1996	13	17	17	8	16
SC—1996	7	10	8	5	8
KY—1998	2	2	5	4	3
NJ—2002	1	1	1	0	1
TX—2005	29	23	14	11	14
NM—2009	0	0	0	0	0

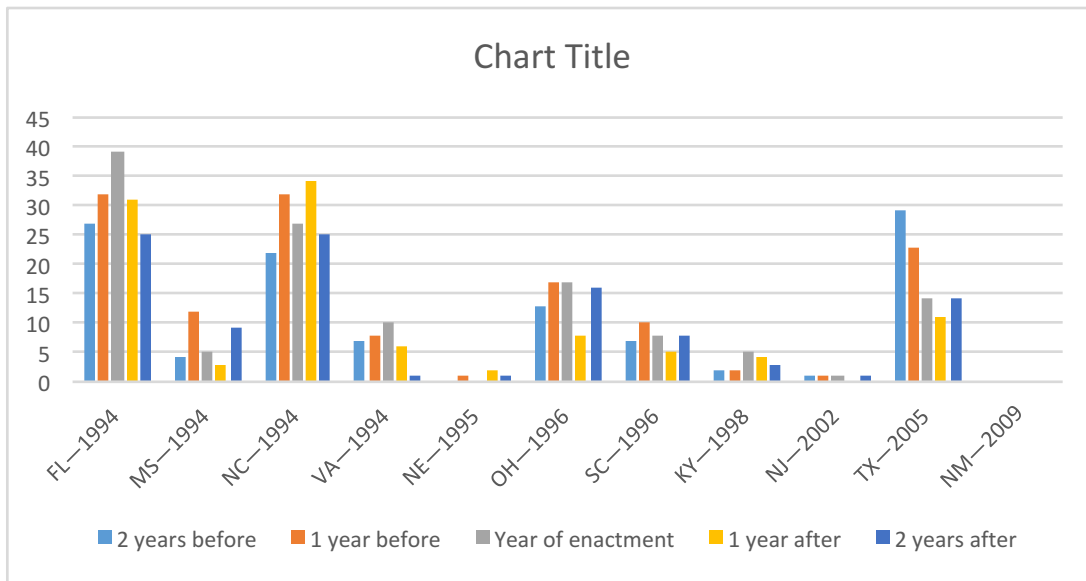


Table 7: Death Sentences as a Percentage of Cases Presented to Sentencers

	# Death sentences	# Sentencer spared	Total # of cases to sentencer	Death sentence %
1994	310	158	467	66%
2004	134	113	248	54%
2014	73	40	113	65%

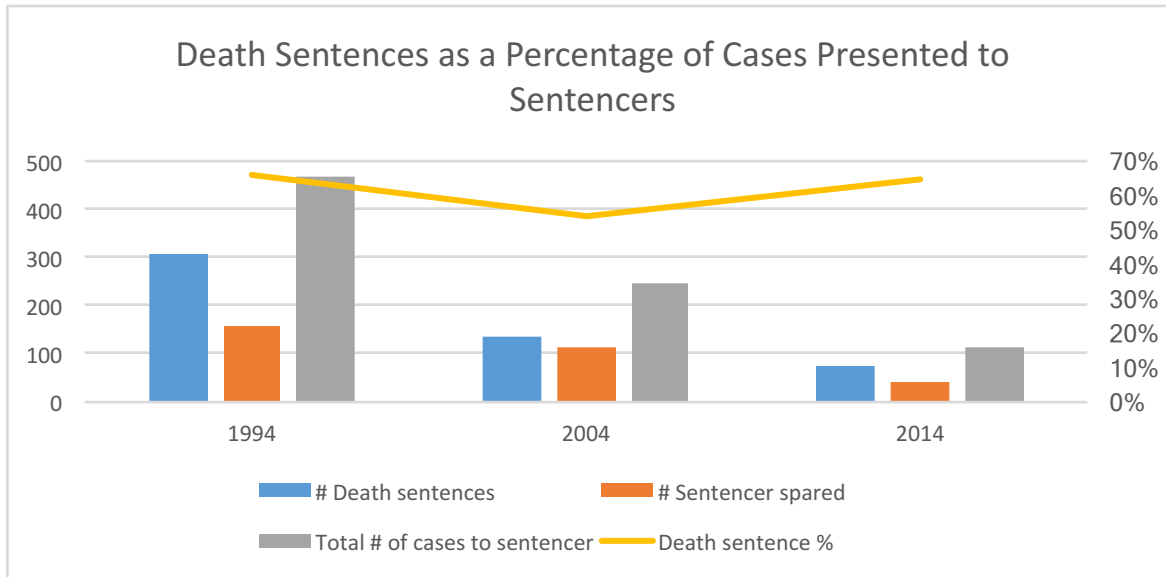


Table 8: Lower Depravity Point Cases as Proportions of DS

	Total DS	# DS with 4 or fewer depravity points	% of DS with 4 or fewer depravity points	# DS with 6 or fewer depravity points	% of DS with 6 or fewer depravity points
1994	310	27	8.70%	61	19.70%
2004	134	9	6.70%	23	17.10%
2014	73	2	2.70%	14	19.20%

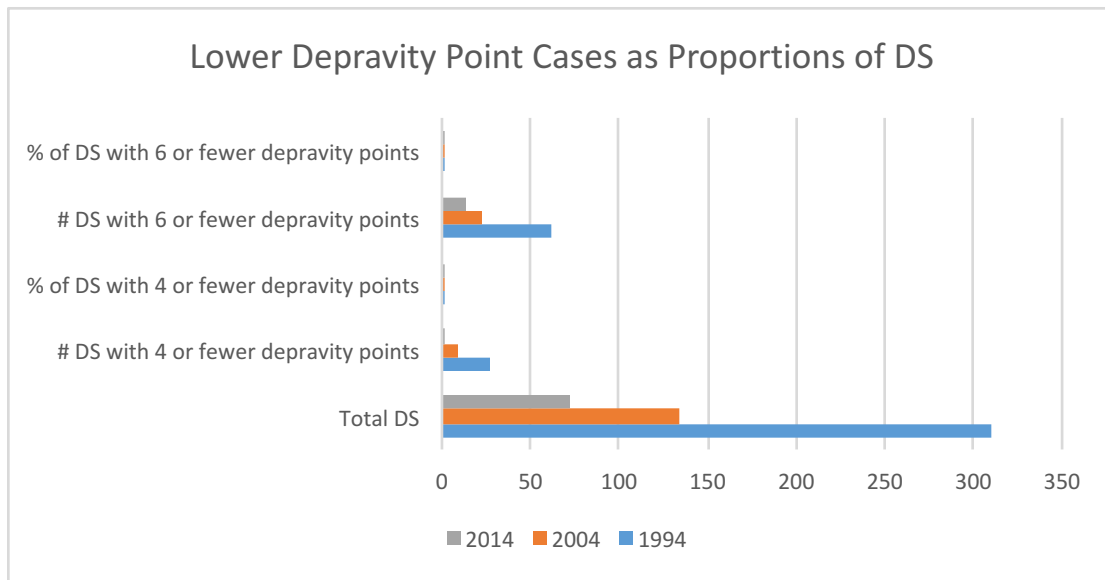


Table 9: Highest Quartile Aggravator

	# DS	# Top quartile Aggravator cases	# Top Quartile DS	# Top quartile non-DS (i.e., SS + PS)	% of Top quartile cases with DS	DS as % of Top quartile cases
1994	310	187	123	64	39.7% (123/310)	65.8% (123/187)
2004	134	160	64	96	47.8% (64/134)	40.0% (64/160)
2014	73	103	39	64	53.4% (39/73)	37.9% (39/103)

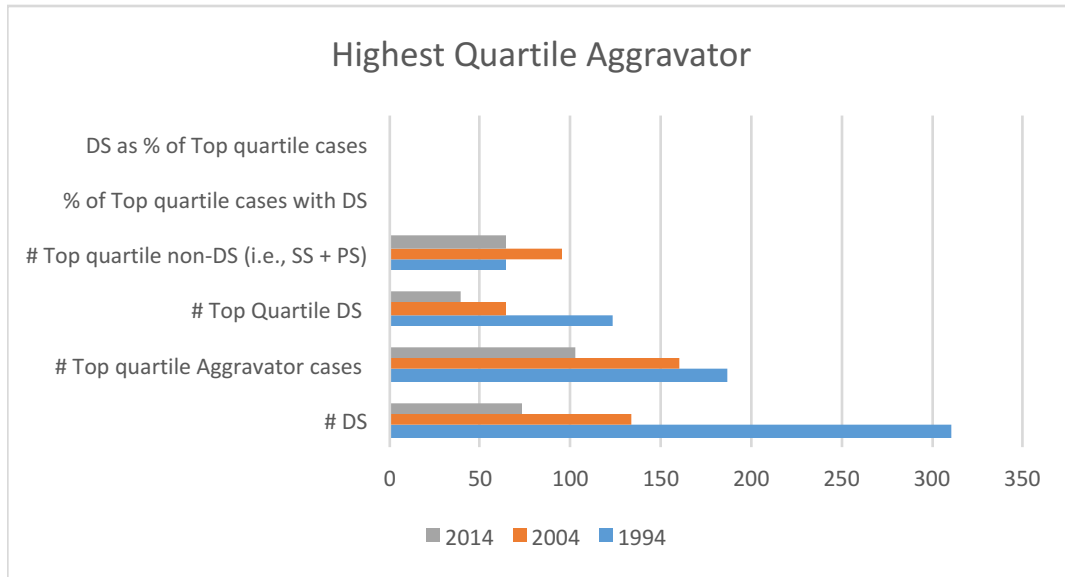
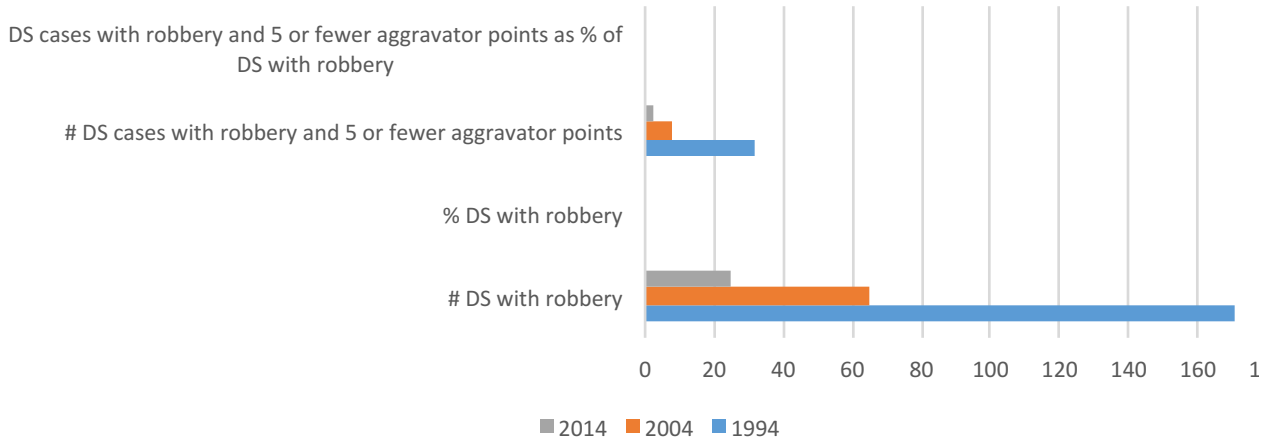


Table 10: Robbery Cases

	# DS with robbery	% DS with robbery	# DS cases with robbery and 5 or fewer aggravator points	DS cases with robbery and 5 or fewer aggravator points as % of DS with robbery
1994	171	55% (171 of 310)	32	18.7% (32/171)
2004	65	48% (65 of 134)	8	12.3% (8/65)
2014	25	34% (25 of 73)	2	8.0% (2/25)

Robbery Cases





180

Table 11: Cases with Defendants 18–20 Years Old

	# DS 18–20 yr-olds	18–20 yr-old DS as % of DS
1994	47	15.2% (47 of 310)
2004	17	12.7% (17 of 134)
2014	3	4.1% (3 of 73)

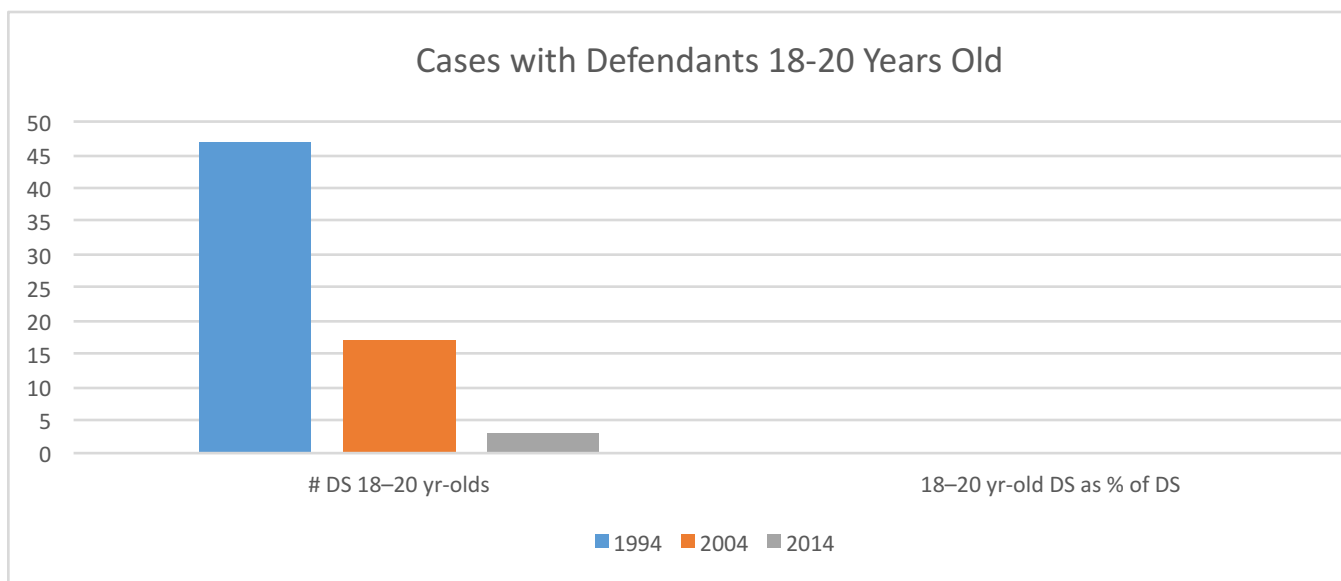


Table 12: Cases with Multiple Perpetrators

	# Multiple perp DS	Multiple perp DS as % of all DS
1994	127	41.0 % (127 of 310)
2004	35	26.1 % (35 of 134)
2014	15	20.5 % (15 of 73)

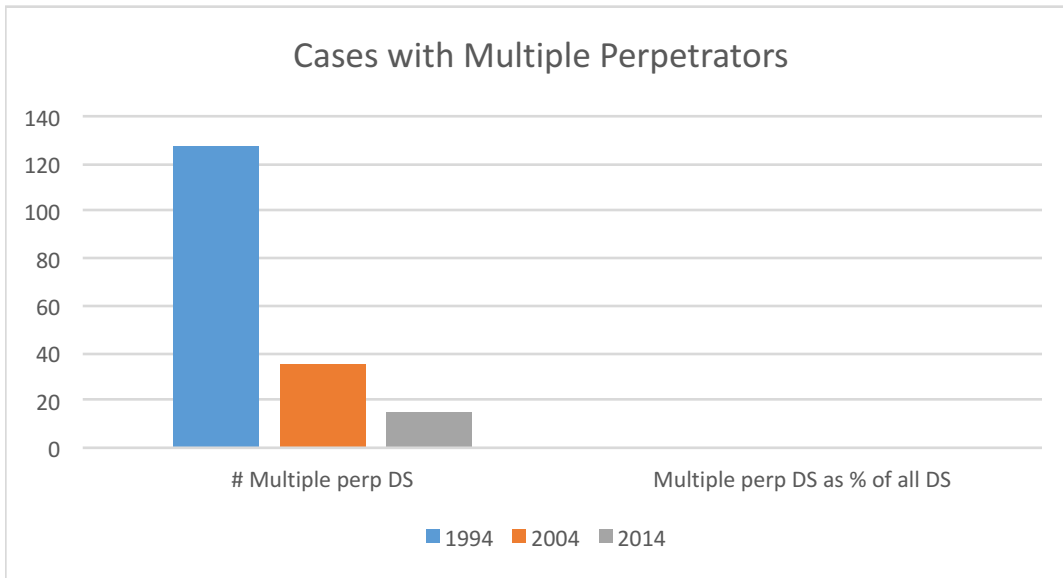


Table 13: Low Population

	DS + SS cases in all counties	DS + SS cases in bottom quartile Low Population	DS + SS cases in bottom quartile Low Population as % of all DS + SS cases
1994	463	56	12.00%
2004	227	21	9.20%
2014	107	7	6.50%

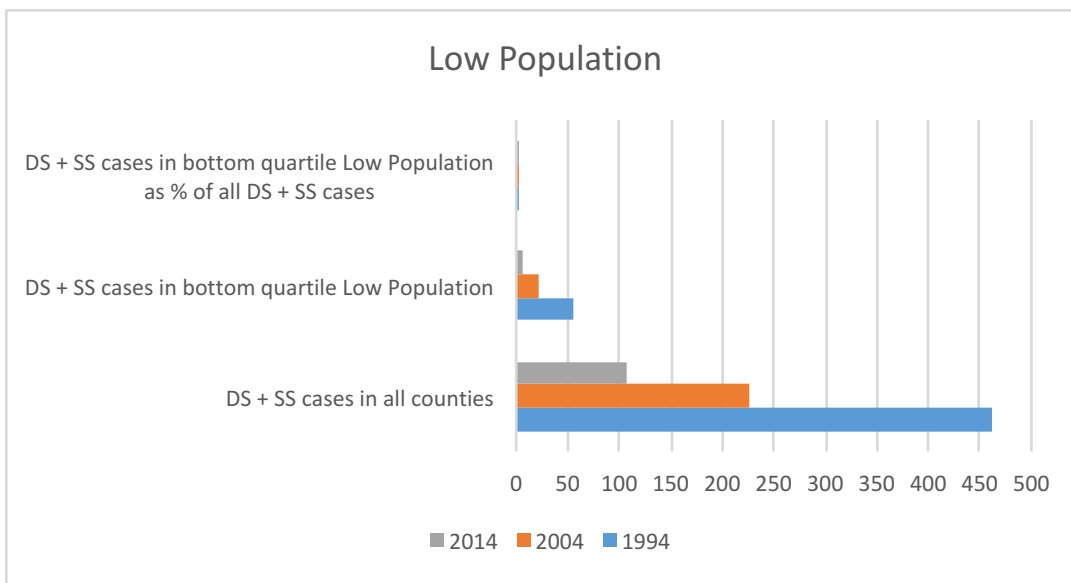
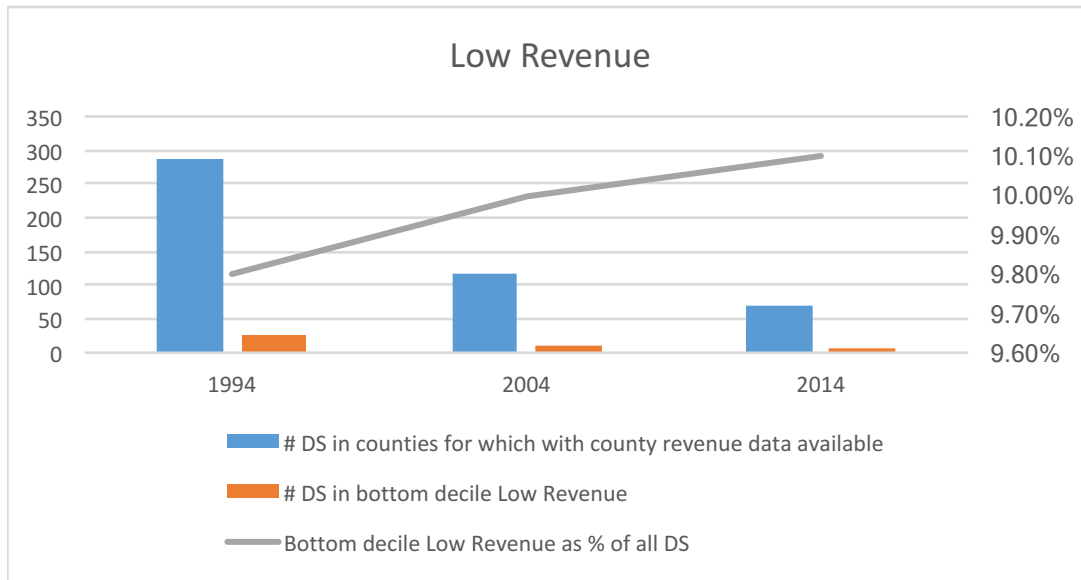


Table 14: Low Revenue

	# DS in counties for which with county revenue data available	# DS in bottom decile Low Revenue	Bottom decile Low Revenue as % of all DS
1994	287	28	9.80%
2004	119	12	10.00%
2014	69	7	10.10%

**Note column B -
() #'s had to be
removed to
chart**

287 (of 310 total DS)
119 (of 134 total DS)
69 (of 73 total DS)



310 total DS)

134 total DS)

73 total DS)